


springernature.com

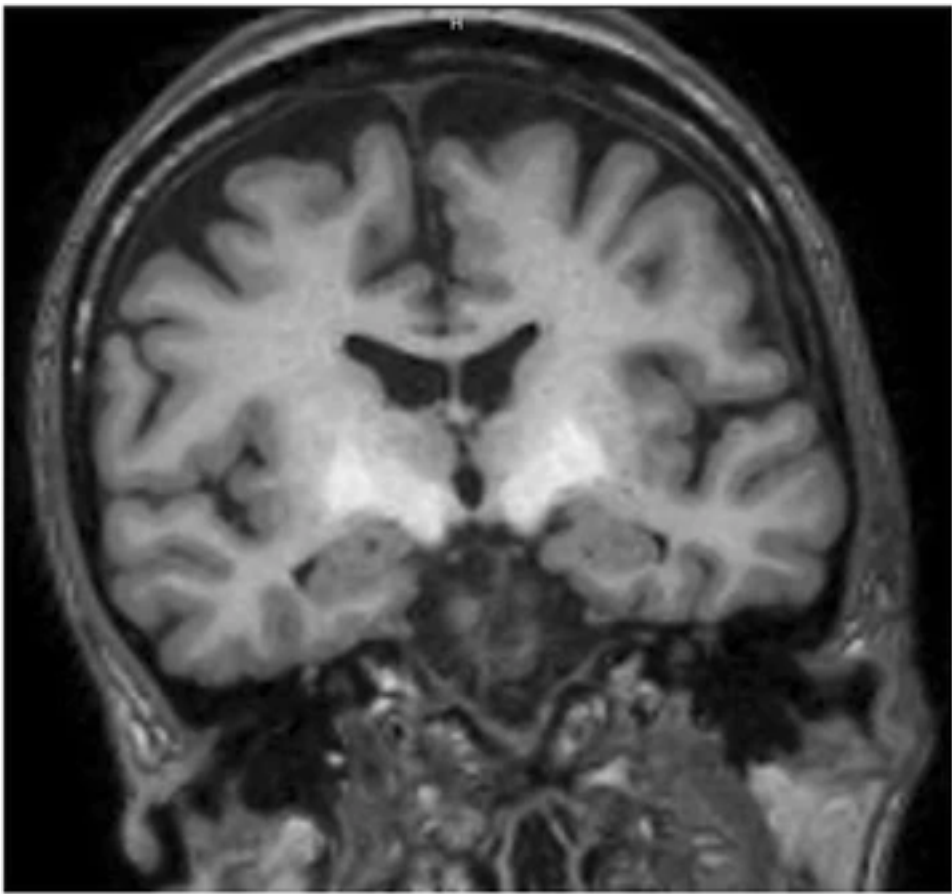
Open for submissions



Visit [Nature news](#) for the latest coverage and read [Springer Nature's statement on the Ukraine conflict](#)

## Fig. 3

From: [Central nervous system manganese induced lesions and clinical consequences in patients with hereditary hemorrhagic telangiectasia](#)



BG-MnIL MRI image. T1 sequence Brain MRI showing hyperintensity signal in the basal ganglia as consequence of manganese deposition

[Back to article page >](#)

### Contact us

Submission enquiries: [Access here and click Contact Us](#)  
General enquiries: [info@biomedcentral.com](mailto:info@biomedcentral.com)

- Read more on our blogs

Receive BMC newsletters

Manage article alerts

Language editing for authors

Scientific editing for authors
- Policies

Accessibility

Press center
- Support and Contact

Leave feedback

Careers

Follow BMC



By using this website, you agree to our [Terms and Conditions](#), [California Privacy Statement](#), [Privacy statement](#) and [Cookies](#) policy. [Manage cookies/Do not sell my data](#) we use in the preference centre.